

Scaled data based on original data using

LM-41-14 Approved Method for Photometric Testing Of Indoor Fluorescent Luminaires

Test Report Prepared for

Cooper Lighting Solutions

(formerly Eaton)

Brand: CORELITE

Report Number: ITL68831

Luminaire Tested: **I2-WL-2N5-1C-UNV-AC48-T1-4**

Issue Date: 3/3/2020

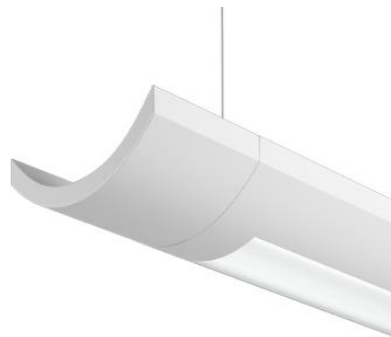
Test Information

Test Method: LM-41-14
Report Number: ITL68831
Test Lab: INDEPENDENT TESTING LABORATORIES, INC.
Issue Date: 3/3/2020
Manufacturer: COOPER LIGHTING SOLUTIONS (FORMERLY EATON)
Product Line: CORELITE
Catalog Number: I2-WL-2N5-1C-UNV-AC48-T1-4
Description: FABRICATED WHITE PAINTED METAL HOUSING, FABRICATED WHITE PAINTED METAL BALLAST COVERS/REFLECTORS, EXTRUDED FROSTED LINEAR PRISMATIC PLASTIC LENS BELOW LAMP, LENS PRISMS UP AND PARALLEL WITH LAMPS, LENS FROSTED BOTH SIDES. OPEN TOP.
Light Source: TWO 28-WATT T-5 SYLVANIA FP28/841/ECO LINEAR FLUORESCENTS.
Ballast/Driver: UNIVERSAL B228PUNV-C

Summary

Lumens per Lamp: 2600 (2 lamps)
Luminaire Lumens: 4992.8 lumens
Efficiency: 96.0%
Efficacy: 79.1 lumens/watt
Spacing Criteria (0/90/45): 1.19 / 1.24 / 1.33
Luminous Opening: Rectangular (W 0.36' x L: 3.98' x H: 0')
CIE Type: Semi-Indirect

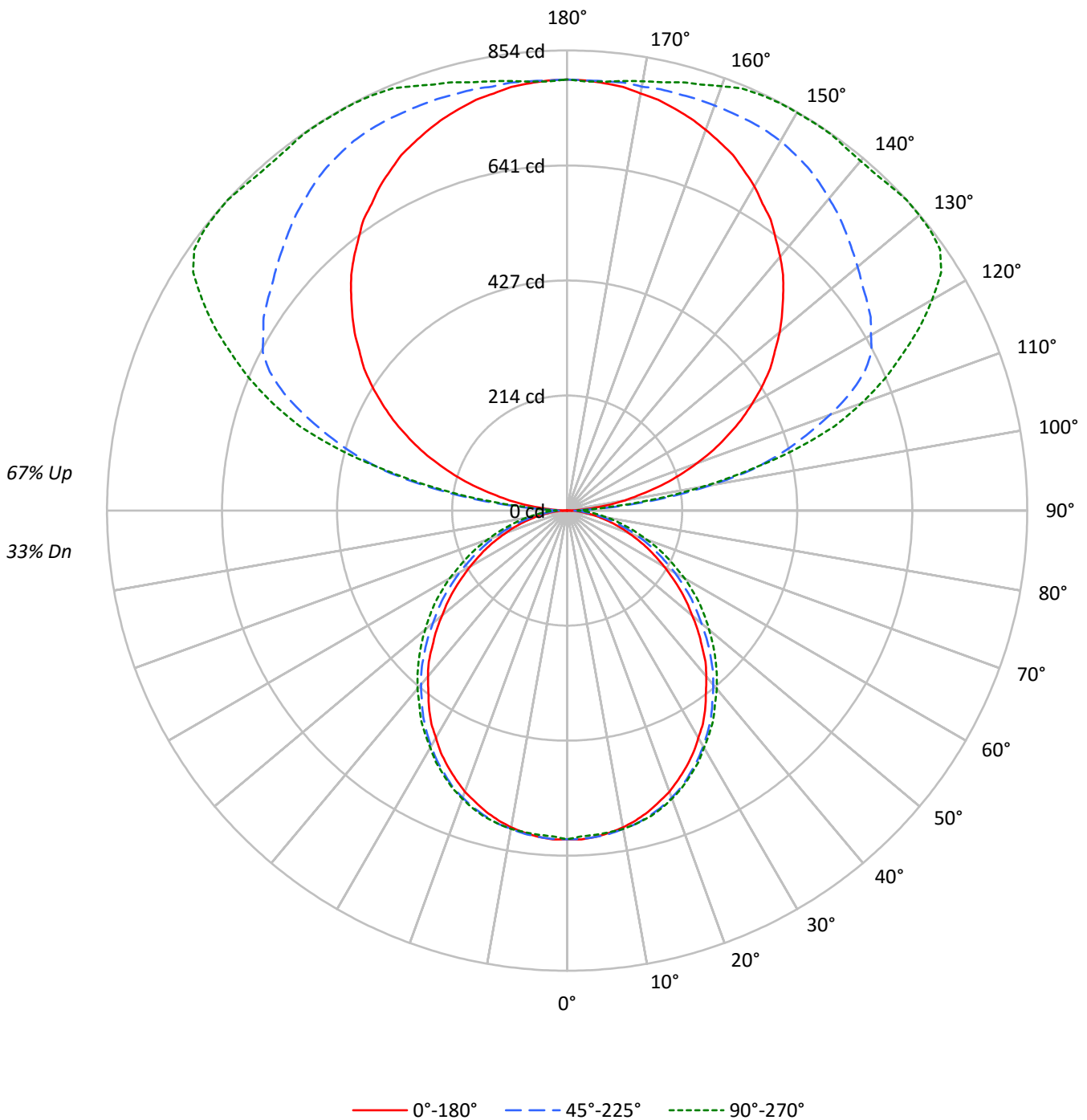
Input Watts (W): 63.1
Input Voltage (V): NR
Input Current (A_{in}): NR
Voltage Rise (V): NR
Power Factor: NR
Total Harmonic Distortion (THDi): NR
Frequency (hertz): 60
Stabilization Time: NR
Operation Time: NR
Ambient Temperature (°C): NR
Test Distance: 25 FT



TEST NUMBER: ITL68831

CATALOG NUMBER: I2-WL-2N5-1C-UNV-AC48-T1-4

Luminous Intensity Polar Plot





TEST NUMBER: ITL68831

CATALOG NUMBER: I2-WL-2N5-1C-UNV-AC48-T1-4

COEFFICIENT OF UTILIZATION - ZONAL CAVITY METHOD:

RF	20									20									20									20										
RC	80									70									50									30									10	0
RW	70	50	30	10	70	50	30	10	50	30	10	50	30	10	50	30	10	50	30	10	50	30	10	0														
RCR																																						
0	99	99	99	99	89	89	89	89	71	71	71	54	54	54	39	39	39	32																				
1	90	86	82	79	81	78	75	72	62	60	58	47	46	45	34	33	32	26																				
2	82	75	69	64	74	68	63	59	54	51	48	42	39	37	30	29	27	22																				
3	75	66	59	54	67	60	54	49	48	44	40	37	34	32	26	25	23	19																				
4	68	58	51	45	61	53	46	41	42	38	34	33	29	27	24	22	20	16																				
5	63	52	44	39	56	47	40	35	38	33	29	29	26	23	21	19	17	14																				
6	58	46	39	33	52	42	35	31	34	29	25	26	23	20	19	17	15	12																				
7	53	42	34	29	48	38	31	27	31	26	22	24	20	18	18	15	14	11																				
8	49	38	30	26	44	34	28	24	28	23	20	22	18	16	16	14	12	10																				
9	46	34	27	23	41	31	25	21	25	21	18	20	17	14	15	13	11	9																				
10	43	31	25	20	38	29	23	19	23	19	16	18	15	13	14	11	10	8																				

AVERAGE LUMINANCE (cd/sqm):

	0°	45°	90°
0°	4520	4520	4520
5°	4522	4522	4493
10°	4492	4515	4515
15°	4442	4503	4518
20°	4376	4471	4487
25°	4284	4407	4431
30°	4167	4321	4347
35°	4043	4215	4279
40°	3889	4082	4179
45°	3699	3930	4076
50°	3493	3747	3966
55°	3307	3604	3876
60°	3083	3423	3735
65°	2875	3226	3577
70°	2621	3033	3401
75°	2405	2806	3264
80°	2219	2688	3243
85°	1955	2806	3911



TEST NUMBER: ITL68831

CATALOG NUMBER: I2-WL-2N5-1C-UNV-AC48-T1-4

ZONAL LUMENS:

Zone	Lumens	% Fixture	% Lamp
0°-10°	57.7	1.2	1.1
10°-20°	165.4	3.3	3.2
20°-30°	247.8	5.0	4.8
30°-40°	290.8	5.8	5.6
40°-50°	290.4	5.8	5.6
50°-60°	251.6	5.0	4.8
60°-70°	185.6	3.7	3.6
70°-80°	108.6	2.2	2.1
80°-90°	40.1	0.8	0.8
90°-100°	114.0	2.3	2.2
100°-110°	386.0	7.7	7.4
110°-120°	548.1	11.0	10.5
120°-130°	597.5	12.0	11.5
130°-140°	558.9	11.2	10.7
140°-150°	480.6	9.6	9.2
150°-160°	366.9	7.3	7.1
160°-170°	226.5	4.5	4.4
170°-180°	76.3	1.5	1.5
0°-30°	470.9	9.4	9.1
0°-40°	761.7	15.3	14.6
0°-60°	1303.7	26.1	25.1
0°-90°	1638.0	32.8	31.5
90°-120°	1048.1	21.0	20.2
90°-150°	2685.1	53.8	51.6
90°-180°	3355.0	67.2	64.5
0°-180°	4992.8	100.0	96.0

CANDELA DISTRIBUTION:

	0°	22.5°	45°	67.5°	90°	Flux
0°	610	610	610	610	610	
5°	608	609	608	606	604	58
15°	579	583	587	591	589	163
25°	524	536	539	547	542	241
35°	447	461	466	476	473	279
45°	353	368	375	390	389	273
55°	256	270	279	300	300	229
65°	164	175	184	205	204	162
75°	84	95	98	117	114	90
85°	23	29	33	46	46	25
90°	0	4	11	18	20	3
95°	39	121	102	92	81	47
105°	181	326	412	440	438	191
115°	328	434	609	673	687	325
125°	460	542	679	804	845	410
135°	567	635	731	815	850	438
145°	659	702	778	835	853	411
155°	728	752	798	839	851	335
165°	772	783	800	817	823	218
175°	796	800	800	798	799	76
180°	800	800	800	800	800	



TEST NUMBER: ITL68831

CATALOG NUMBER: I2-WL-2N5-1C-UNV-AC48-T1-4

CANDELA DISTRIBUTION (FULL):

	0°	22.5°	45°	67.5°	90°
0°	610	610	610	610	610
2.5°	611	611	610	608	605
5°	608	609	608	606	604
7.5°	603	605	605	604	602
10°	597	600	600	601	600
12.5°	589	592	595	597	595
15°	579	583	587	591	589
17.5°	567	574	578	583	580
20°	555	562	567	572	569
22.5°	540	549	555	560	557
25°	524	536	539	547	542
27.5°	507	518	523	530	527
30°	487	500	505	514	508
32.5°	469	481	486	494	491
35°	447	461	466	476	473
37.5°	423	440	443	456	451
40°	402	416	422	433	432
42.5°	380	393	400	413	411
45°	353	368	375	390	389
47.5°	329	344	351	369	367
50°	303	320	325	347	344
52.5°	280	293	302	323	322
55°	256	270	279	300	300
57.5°	231	247	254	277	275
60°	208	221	231	253	252
62.5°	185	198	206	229	226
65°	164	175	184	205	204
67.5°	142	154	163	182	181
70°	121	133	140	160	157
72.5°	103	112	120	137	135
75°	84	95	98	117	114
77.5°	66	75	81	96	95
80°	52	59	63	77	76
82.5°	36	44	46	61	59
85°	23	29	33	46	46
87.5°	11	17	23	33	34
90°	0	4	11	18	20
92.5°	12	41	31	34	35
95°	39	121	102	92	81
97.5°	73	187	186	180	168
100°	108	236	271	266	257
102.5°	141	288	352	357	345
105°	181	326	412	440	438
107.5°	219	355	465	514	520
110°	256	380	519	568	581



TEST NUMBER: ITL68831

CATALOG NUMBER: I2-WL-2N5-1C-UNV-AC48-T1-4

CANDELA DISTRIBUTION (continued):

	0°	22.5°	45°	67.5°	90°
112.5°	294	407	569	623	637
115°	328	434	609	673	687
117.5°	364	462	637	721	738
120°	396	490	651	766	782
122.5°	429	517	668	794	823
125°	460	542	679	804	845
127.5°	486	569	690	811	851
130°	515	591	704	815	853
132.5°	541	613	717	816	854
135°	567	635	731	815	850
137.5°	593	653	745	820	847
140°	615	670	756	823	847
142.5°	636	686	768	828	849
145°	659	702	778	835	853
147.5°	675	716	785	836	853
150°	695	728	792	838	853
152.5°	711	742	796	839	853
155°	728	752	798	839	851
157.5°	740	762	799	836	848
160°	752	769	800	827	838
162.5°	763	777	801	821	829
165°	772	783	800	817	823
167.5°	781	788	801	811	814
170°	786	794	799	806	809
172.5°	793	799	801	801	804
175°	796	800	800	798	799
177.5°	799	801	799	796	797
180°	800	800	800	800	800

(END OF REPORT)